

**NEWS RELEASE**Contact: Charles Larsen, Larsen Innovations, 714-369-8033, [charlie@LarsenInnovations.com](mailto:charlie@LarsenInnovations.com)

Date: June 1, 2009

**Larsen Innovations announces new additions to their Accura Precision cantilever hardware line of products.**

Huntington Beach, Calif. — Larsen Innovations announced new additions to their Accura™ Precision cantilever hardware line. In addition to their external nylon rollers for 2 1/2" (2 3/8") round gate frames for 4" round posts the company says it now offers rollers for 2 7/8" and 3 1/2" posts and internal truck assemblies, guide rollers and related products as part of their standard offering.

"Our Accura Precision external rollers have been so well received by our customers that we have had numerous requests to add additional options to our line. These two new sizes of our external rollers accommodate the need for some of our Canadian customers and for our customers that need a high quality roller for a smaller gate opening that may have a very high frequency of use. Like our other external rollers they come complete with covers pre-installed and roller guards" company president, Charlie Larsen commented.

"In addition to our external nylon cantilever rollers, we have now placed a greater focus on our internal truck assemblies, brackets and bottom guide rollers. More contractors are fabricating their own aluminum cantilever gates and are looking for value without sacrificing quality in the hardware. Consistent with our approach to safety on our external hardware and part of our value added philosophy, our bottom guide rollers come with covers pre-installed at no additional cost. We even have a website dedicated to our roller hardware at [CantileverRollers.com](http://CantileverRollers.com)." Larsen stated.

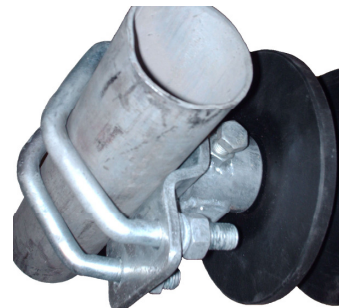
Larsen Innovations brings more than 30 years experience in the fence industry and offers temporary fence systems and kennels based upon their proprietary panel design as well as other specialty items such as cantilever hardware for the fence industry.



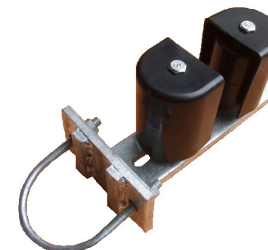
Internal hardware includes features such as covers pre-installed on the guide rollers.



4" x 2 1/2" roller shown with cover and guard installed.



3 1/2" and 2 7/8" post sizes use the 4" bracket with a modified U bolt.

For more information visit [www.LarsenInnovations.com](http://www.LarsenInnovations.com) or contact them at 714-369-8033.

###